



27 CARDIFF STREET, ABERDARE, CF44 7DP

TEL: 01685 878000 FAX: 01685 878000



Cwm Alarch

Mountain Ash, CF45 3DR

£379,995



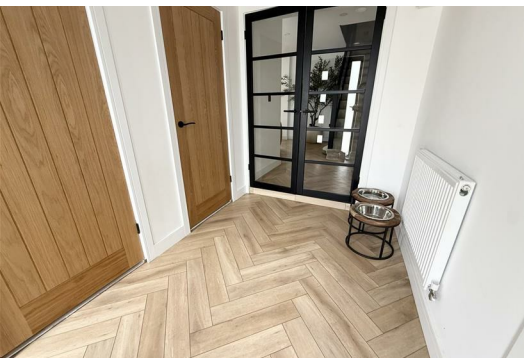
Situated in the quiet area of Cwm Alarch, Mountain Ash, this newly renovated detached house complete with a full electrical rewiring, new central heating system and plumbing, along with full new insulation internal and external.

This property offers a perfect blend of modern living and comfort. The heart of the house is a beautifully designed open-plan living and dining area, which is enhanced by bifolding doors that open up to a generous garden with beautiful views of the surrounding mountains.

The kitchen is a chef's delight, fitted with high-quality NEFF appliances and elegant Dekton worktops, making it both stylish and functional. A cosy bioethanol fire serves as a charming focal point in the living room and kitchen, providing warmth and ambience during the cooler months.

This home also boasts two well-appointed bathrooms, including a convenient shower room located on the ground floor, perfect for guests or busy family life. The property features a warm reception room, offering ample space for relaxation and entertainment and a cosy cinema room.

With its modern amenities and thoughtful design, this detached house in Cwm Alarch is a wonderful opportunity for anyone looking to settle in a tranquil yet accessible location.



Disclaimer

N.B Whilst these particulars are intended to give a fair description of the property concerned, their accuracy is not guaranteed and any intending purchaser must satisfy himself by inspection or otherwise, as to the correctness of statements contained herein.

The particulars do not constitute an offer or contract, and statements herein are made without responsibility, or warranty on the part of the Vendor or Manning Estate Agents, neither of whom can hold themselves responsible for expenses incurred should the property no longer be available. Items shown in photographs are NOT included unless specifically mentioned in particulars. They may however be available by separate negotiation.

The Property Misdescription Act 1991

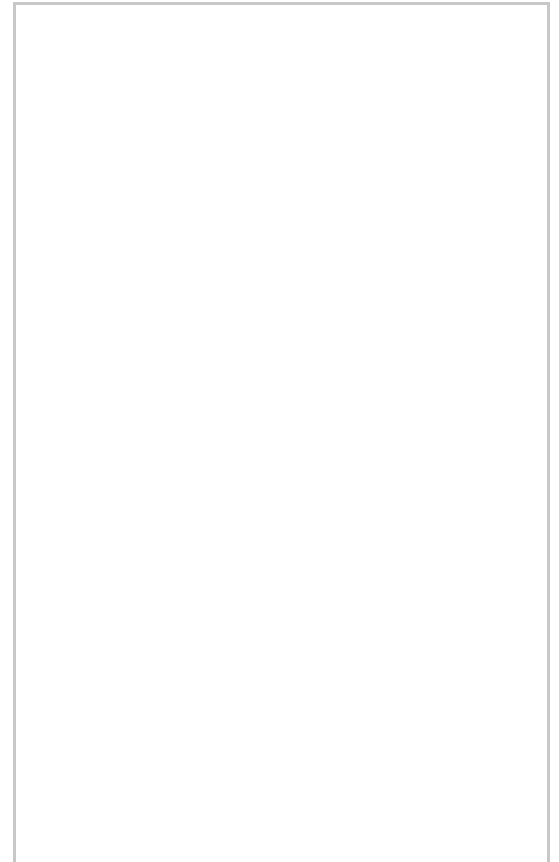
The Agent has not tested any apparatus, equipment, fixtures and fittings or services and so cannot verify that they are in working order or fit for the purpose. A buyer is advised to obtain verification from their Solicitor or Surveyor. References to the Tenure of the property are based on information supplied by the seller. The Agent has not sight of the title documents. A Buyer is advised to obtain verification from their Solicitor.

You may download, store and use the material for your own personal use and research. You may not republish, retransmit, redistribute or otherwise make the material available to any party or make the same available on any website

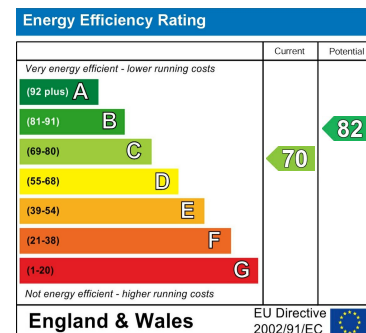
Area Map



Floor Plans



Energy Efficiency Graph



These particulars, whilst believed to be accurate are set out as a general outline only for guidance and do not constitute any part of an offer or contract. Intending purchasers should not rely on them as statements of representation of fact, but must satisfy themselves by inspection or otherwise as to their accuracy. No person in this firm's employment has the authority to make or give any representation or warranty in respect of the property.